



← BROCKVILLE 100



← GO 4 ROCK

GILMOUR BLOCK

c1850's

224 King St. West 1 Storefront



DIRECTORY LISTINGS:

1867/1959: T. Gilmour & Co. (224)
 1961/1963: Smart's Hardware, plumbing & heating div. (224)
 1965/1969: Stewart's Toyland / Smart's Pro Hardware, plumbing & heating div. (224)
 1971: vacant (224)
 1973/1990: Riteway Appliance Sales (224)
 1992: Home Front Furniture & Appliance (224)
 1995/1997: Sheridan Home Centre & Interiors (224)
 2000/2001: vacant (224)
 2002/2003: Youth for Christ Brockville (224)
 2004/2005: (K Sheridan) (224)
 2006/2007: Thousand Islands Martial Arts (224)
 2009/2015: Reliable Home Furniture (224)
 2018: Reliable Furniture (224)
 2019/2020: B & G Mattress Warehouse (224)
 2022: Annable Designs (224)

Doug Grant's research states that stone buildings were erected on this property by William Doak, step-son of Daniel Jones Sr. Our earliest photos on King St. were taken in 1860 for the Royal visit of Queen Victoria's eighteen-year-old son, Albert Edward, Prince of Wales. He later succeeded her as King Edward VII. In the photo at the bottom is a picture of the west end of King street taken during the Royal visit. This building appears in the photo.

The property and buildings were purchased by William Gilmour in 1864. His son, Thomas Gilmour founded a grocery and wholesale business, the T. Gilmour & Co., the next year. It was in partnership and financed by his father, who previously had a similar business across the street. Twenty years later, even though the retail side was the largest in Brockville, the wholesale side was going even better. To manage it, the retail side was shut down. James H and Albert Gilmour took over the leadership of the company in 1894, at the retirement of the others. It was renamed simply Gilmour & Co. By 1923, James was gone and it continued on with Albert. The post-war era was managed by Patrick E. Mahern.

Only a half decade short of a century in business here, the Gilmour wholesale grocery business was sold to M. Loab, Ltd. in Oct. 1958. It was not only the oldest in Brockville, but one of the oldest in Ontario. The real estate did not go with the business sale. They picked Loeb's from several offers to allow them to keep part of the business as a holding company and keep the employees. Loeb's built a new warehouse on the second concession (unknown how long it stayed open), and mainly serviced IGA and Muchmore stores.

Riteway Appliance Sales, Ltd. sold electrical appliances, furniture, televisions, radios, stereos and antiques. For a time they were the distributor of products from Electrolux Canada. It was owned by Sam Zigman, who had a warehouse on 16 Brock St. Riteway was in the building from around 1972 to around 1991.

Home Front Furniture & Appliance, Inc., owned by Nico Dewitt, had a brief stay here before being taken over by Sheridan Home Centre & Interiors around 1994.

B & G Mattress Warehouse opened July, 2019 with it's Grand Opening on July 19th/20th. A bad time for them and anyone opening late this year as the Pandemic would strike within 9 months. This had to have taken a toll on them as they closed Tuesday, June 30, 2020, pretty much one full year of business.

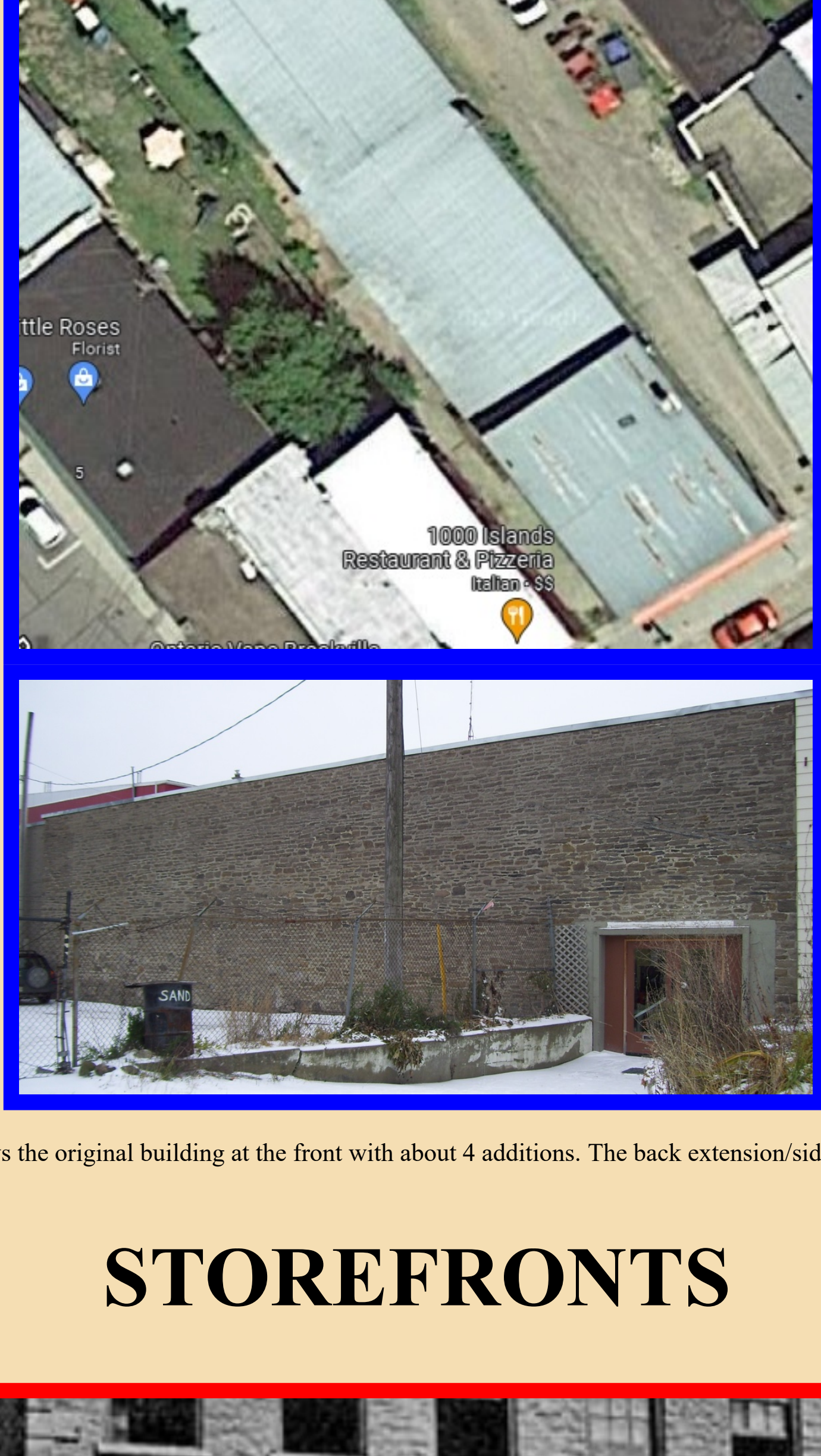
Annable Design was founded in October 2012 by David T. Annable as a Residential Design, Consulting and Planning company. The company moved into this building in mid 2022.

OUTSIDE INFORMATION:

[T. Gilmour](#), [Doug Grant](#)

(Information taken from the various business directories, Recorder & Times articles, business websites, Doug Grant article above)

OTHER VIEWS



The satellite view shows the original building at the front with about 4 additions. The back extension/side view with an opening heading to John St.

STOREFRONTS

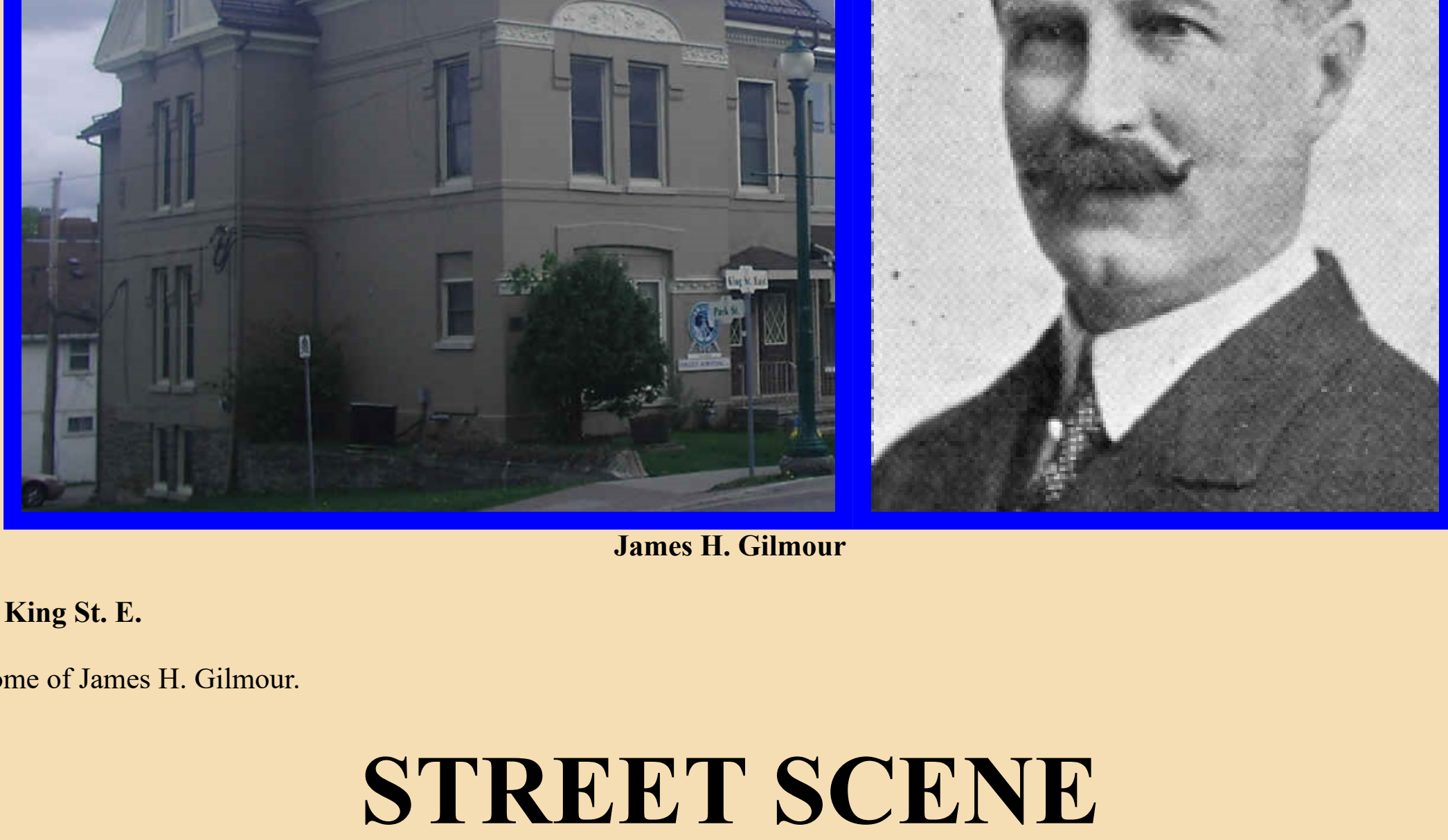


ADVERTISING



T. Gilmour grocery, 1867; B & G Mattress Warehouse Grand Opening Ad, 2019.

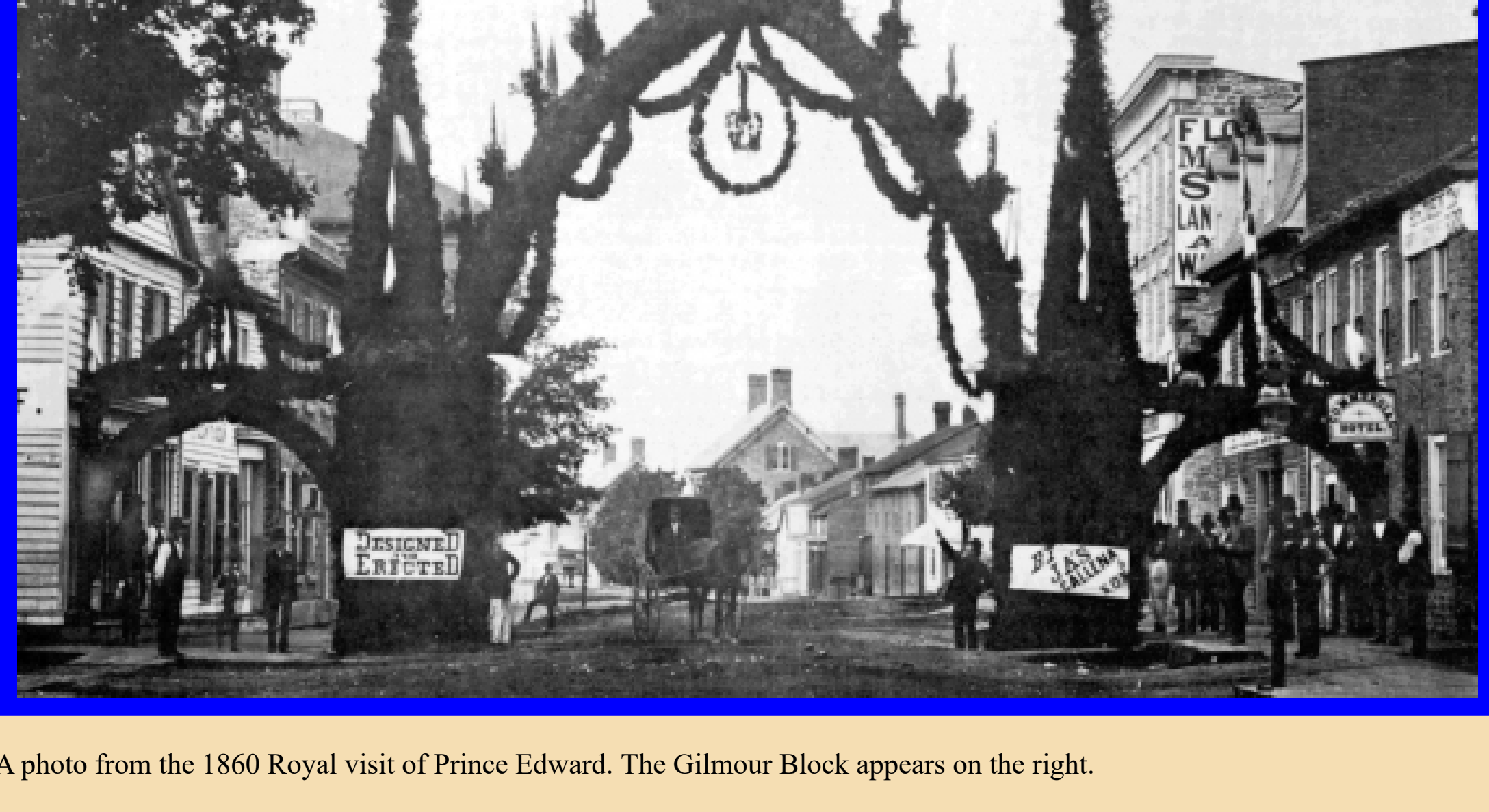
JAMES GILMOUR HOUSE



75 King St. E.

Home of James H. Gilmour.

STREET SCENE



A photo from the 1860 Royal visit of Prince Edward. The Gilmour Block appears on the right.