



# MELLEFONT BLOCK pre 1850

## 24 - 38 King St. E. 66 King St. (1880's)



### DIRECTORY LISTINGS:

- 1880: --- ?? ---: --- ?? ---: East End Stove Depot, stove, tinware
- 1884/1885: G.H. Weatherhead, insurance; C.D. Manuel, grocery; East End Stove Depot, stove, tinware
- 1886/1887: G.H. Weatherhead, insurance agent; C.D. Manuel, grocer; Mellefont Grocery
- 1890: Mrs. T.E. Seaman, fancy goods; J.T. Stoliker, barber; Mrs G. H. Purvis, dress maker; William Simpson Grocery
- 1895: George Wooding, boots & shoes; J.T. Stoliker, barber; J.H.C. Todd, vet surgeon; William Simpson Grocery
- 1899/1900: People's Coal Co.; Powel H Overton, insurance; Miss H.O. McCrady, hair goods; James Miller Grocery
- 1910: George Seekings Grocery (28), Miss H.O. McCrady, hair goods (30), R.B. Heather, florist (34)
- 1913/1915: W.J. Chapman Grocery (28), Miss H.O. McCrady, hair goods (30), R.B. Heather, florist (34)
- 1916/1919: Joseph Malette, shoeshine (28), Miss H.O. McCrady, hair goods (30), R.B. Heather, florist (34)
- 1921: Joseph Malette, shoeshine (28), Miss H.O. McCrady, hair goods (30), Stack-McHenry Auto Sales (34)
- 1924: Stack-McHenry Auto Sales (34-38)
- 1925/1926: McHenry Motor Co., auto sales (34-38)
- 1928/1956: Roode Bro., Ford dealership, auto & supplies (34-38)
- 1960/1978: Firestone Stores (26)
- 1980: vacant store (26)
- 1982/1995: Giant Tiger Discount store (26)
- c1996/2009: Scott's Discount store [Giant Tiger] (26)
- c2010/2022: The New Oak Tree Gallery Showroom (26)

This building was originally built in three sections as seen in the top photo. It may have been a fully stone structure. There were two major renovations in the early twentieth century. The first was to remove the eastern section, leaving the western and middle. The original back section was removed and replaced by a much larger building. This probably happened around 1922 when the **Stack-McHenry** car dealership when from being in one section to occupying the entire building. You can still see the outline of the sloping roof on the west stone wall.

A second renovation removed the peaked roof, adding a full third floor, and turned it into a block style. This happened while it was a Ford dealership, and seems to have been done in the 1930s. The street scene at bottom shows the building still with a peaked roof after the Manitonna Hotel appeared across the street in 1929.

Robert Sheridan's first location was in the Mellefont Building for 5 years, 1880 to 1885. It was called the **East End Stove Depot** and offered stove & tinware, house furnishing goods, plumber, steam and gas fitter. According to a 1950 Anniversary Ad, he has brothers James, Wilson and Thomas in the business with him. It is unclear if they are partners (probably) or simply working for him.

Sheridan, who was 21 and originally from Northern Ireland, had previously had a three-year apprenticeship with Henry Empey. The store was small, and he soon found he needed a larger one.

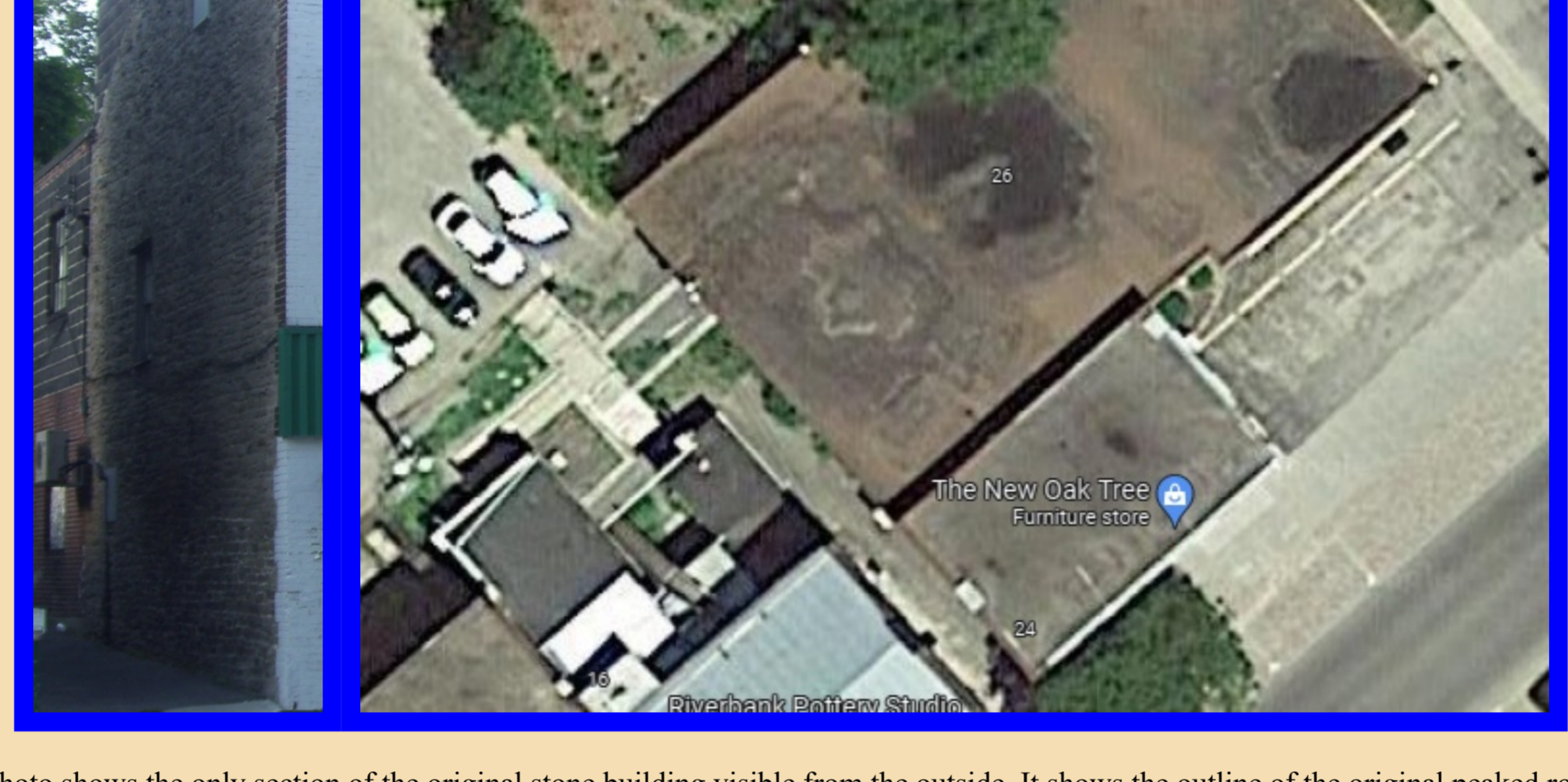
**G.W. Mellefont**, grocer, had farmers produce, provisions along with crockery and glassware. His home was at 8 William St. (1880s address)

The early 20th century saw this location as a car dealership. Under **Stack-McHenry**, they sold Dodge. This was the Dodge Brothers Motor Company before it was acquired by Chrysler. When **Roode** took over the dealership, they sold Ford, the world's largest selling brand. They also sold products from the Studebaker Brothers Manufacturing Company, including Studebaker and Erskine in the early 1930s.

**Giant Tiger** moved here after the 1979 fire destroyed their location on Market Ave. Sometime in the mid 1990s, Giant Tiger switched the branding of this store (along with many others) to their lower end **Scott's Discount Store**. It remained with this branding until it closed. Later, Giant Tiger opened a newer location on Park St. The Scott's brand was dispensed with in later years altogether.

The **New Oak Tree** opened in Brockville around 2010. They sell solid wood furniture, primarily Canadian made. The chain also has stores in Carleton Place, Pembroke and Navin, but the Brockville store is the only one that is Independently Owned & Operated.

## OTHER VIEWS



The left photo shows the only section of the original stone building visible from the outside. It shows the outline of the original peaked roof, filled in with brick on each side. The building would also have the stone wall at the back, but now a hidden wall between the two sections. When you look at the satellite view, you can see how the newer back section dwarfs the older front section of the building.

## STOREFRONTS

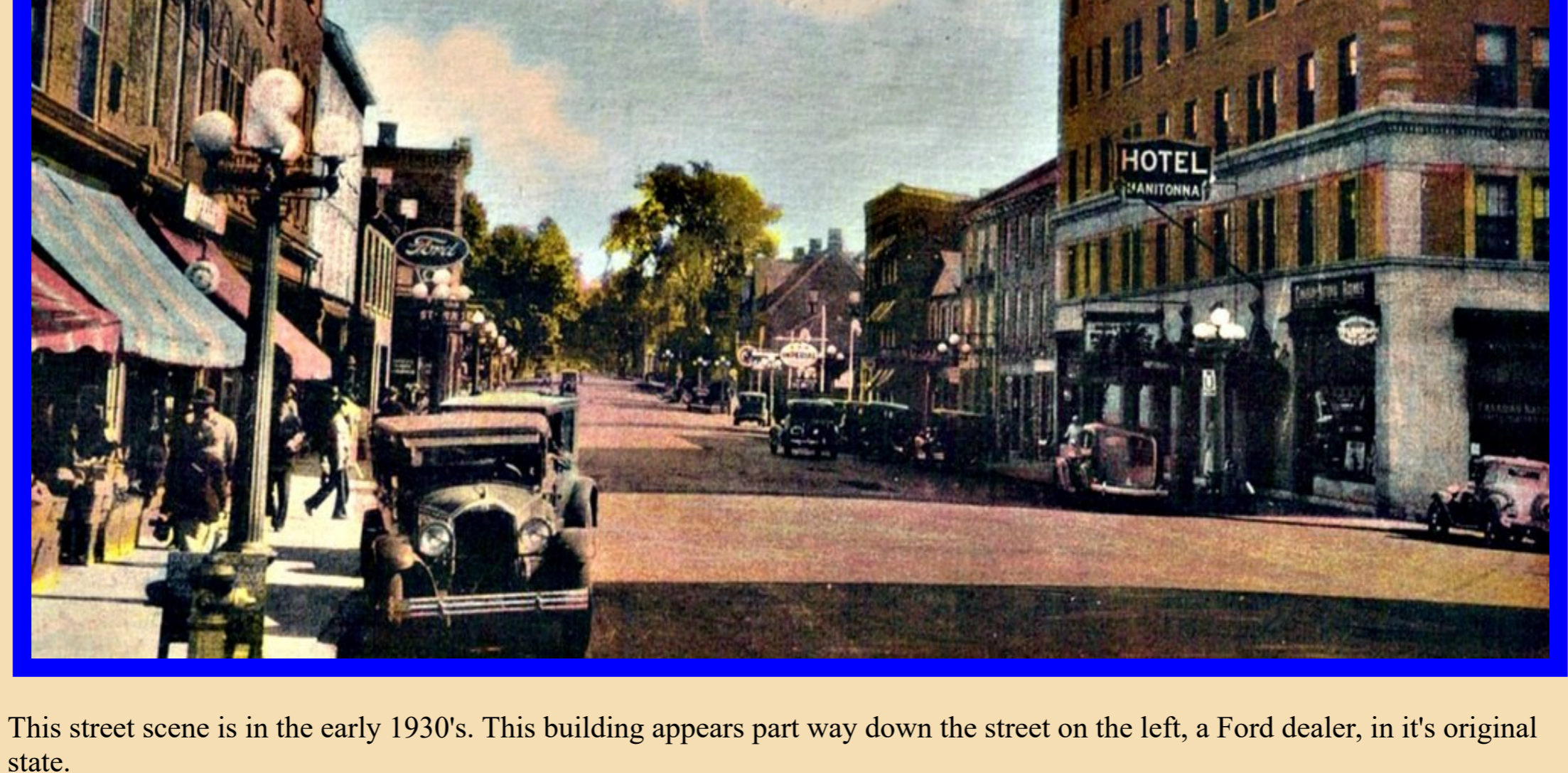


## ADVERTISING



East End Stove Depot, 1885; Mellefont grocery, 1886; Firestone, 1958; New Oak Tree, 2013.

## STREET SCENE



This street scene is in the early 1930's. This building appears part way down the street on the left, a Ford dealer, in it's original state.